



The SD205U is designed to be small and lightweight, but is powerfully enough at 2000 ANSI lumens to impress any audience.

Value for the Cost Concious

The SD205U is an excellent choice for the cost conscious user who does not want to compromise on performance, quality and reliability. This ultra-portable DLP™ projector only weighs 5.3 lbs, supports native SVGA resolution, an amazing 2000:1 contrast ratio and shines bright at 2000 ANSI lumens for an impressively bright picture. It supports flexible connectivity options for both video and data, and is backed by Mitsubishi's exclusive ERA and Warranty programs.

- DLP™ technology
- Native SVGA (800x600) resolution
- 2000 ANSI lumens and a contrast ratio of 2000:1
- Lightweight at only 5.3 lbs
- 3-years or 10,000-hours on the TI-DLP DMD Chip, 2-years parts and labor, 2-years Express Replacement Assistance (ERA), 90-days or 300-hours lamp warranty

SD205U

SVGA DLP™ PROJECTOR

TOP VIEW

BACK VIEW

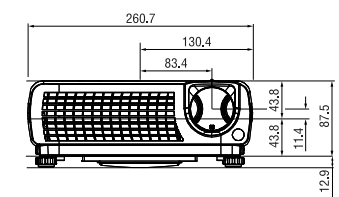
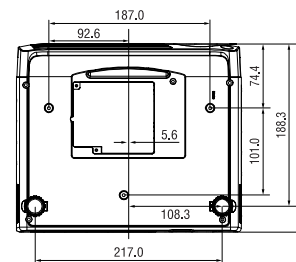
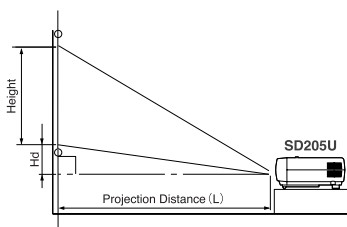


SIDE VIEW

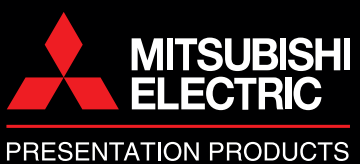
FRONT VIEW

DISPLAY TECHNOLOGY	0.55", 1-Chip DMD, 12 deg. DDR, DDP2000
RESOLUTION	800 x 600 (Total 480,000 pixels), 500 Video Lines
BRIGHTNESS	2000 ANSI lumens
CONTRAST RATIO	2000 : 1 (on/off)
ZOOM/FOCUS	Manual Focus & Zoom Lens
PROJECTION LENS	F= 2.4 (Wide) 100" @ 3.2 m (Wide)
THROW RATIO	1.56 - 1.87
OFF SET AXIS	7.9 : -1 up (No variable lens shift)
PICTURE SIZE	40-300 diagonal inches
SOURCE LAMP	205W (Shut Off Time 2000 Hrs) with Low Mode (164W: Shut Off Time 3000 Hrs)
PC COMPATIBILITY	Resolution: 640 x 400 - 800 x 600 + Compressed 1024 x 768 Sync on Green available
VIDEO COMPATIBILITY	NTSC/NTSC 4.43/PAL (including PAL-M, N) /SECAM/PAL-60, Component Video; 480i/p (525i/p), 576i/p (625i/p), 720p (750p), 1080i (1125i 60Hz), 1080i (1125i 50Hz)
INPUT TERMINALS	RGB: Mini D-sub 15pin x 1 Audio: Stereo Mini Jack (ø 3.5mm) x 1 Video: RCA x 1 + S-VIDEO x 1
OUTPUT TERMINAL	RGB: Mini D-sub 15pin x 1 Audio: Stereo minijack (ø 3.5mm) x 1 (variable lineout)
COMMUNICATION TERMINAL	USB terminal for Page Up/Down (with optional cable)
SCANNING RATE	[H] 15 - 80 kHz, [V] 50 - 85 Hz, [Dot Clock] max 110 MHz
AUDIO SPEAKER	2 W Mono
HEIGHT ADJUSTER	Rearward lifting leg x 2
HAND REMOTE UNIT	1) Projector fully control, 2) Power Point™ Page Up/Down via USB (with optional cable)
POWER CONSUMPTION	280W/2.9A
DIMENSION	10.28 x 8.58 x 3.42 inches (L x W x H)
WEIGHT	5.29 lbs.
POWER REQUIREMENTS	AC 100-240V, 50/60 Hz
FAN NOISE	36 dBA (Low mode: 30 dBA)
SUPPLIED ACCESSORIES	<ul style="list-style-type: none"> • Soft carrying bag • Remote control • Power cable • VGA (D-sub) cable • Composite cable • Owner's manual (CD-ROM) • Safety manual • Quick start manual
OPTIONAL ACCESSORIES	Replacement Lamp (VLT-XD205LP)
WARRANTY	3-years or 10,000-hours on the TI-DLP DMD Chip, 2-years parts and labor, 2-years Express Replacement Assistance (ERA), 90-days or 300-hours lamp warranty

SCREEN					DISTANCE FROM SCREEN (L)				Hd		
Diagonal Size		Width		Height		Max.Zoom		Min.Zoom		Hd	
inch	cm	inch	cm	inch	cm	inch	m	inch	m	inch	m
40	102	32	81	24	61	50	1.3	60	1.5	3.5	8.8
60	152	48	122	36	91	76	1.9	91	2.3	5.2	13.3
80	203	64	163	48	122	101	2.6	121	3.1	7.0	17.7
100	254	80	203	60	152	126	3.2	151	3.8	8.7	22.1
150	381	120	305	90	229	189	4.8	227	5.8	13.1	33.2
200	508	160	406	120	305	252	6.4	302	7.7	17.4	44.2
250	635	200	508	150	381	315	8.0	378	9.6	21.8	55.3
300	762	240	610	180	457	378	9.6	-	-	26.1	66.3



Unit measured in millimeters (mm)



MITSUBISHI DIGITAL ELECTRONICS AMERICA, INC.
 Presentation Products Division
 Toll Free: 888.307.0349
 Email: ppdinfo@mdea.com
www.mitsubishi-presentations.com

Canada
 Mitsubishi Electric Sales Canada Inc.
 Information Technologies Group
 Phone: 905.475.7728
www.mitsubishielectric.ca



©2005 Mitsubishi Digital Electronics America, Inc. Standard features, options and specifications subject to change without notice. The DLP™ logo and DLP™ medallion are trademarks of Texas Instruments. Microsoft, Windows, and the Windows logo are registered trademarks of Microsoft Corporation. Mac and the Mac logo are trademarks of Apple Computer, Inc, registered in the U.S. and other countries. All other trademarks are the property of their respective holders.
 *The projector lamp contains mercury. Please dispose of properly.

PP20069-11/05-15M-LTSD205U